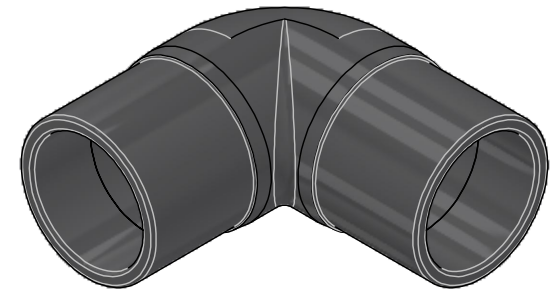


CODE	Weight lbs/pc	Volume ft ³ /pc	ND	OD	D	S min	L1	H1	H
12EIG02	0.556	0.0505	2" IPS	2.375	2.68	0.22	2.76	4.72	6.06
12EIG03	0.672	0.1214	3" IPS	3.5	3.8	0.32	3.54	5.85	7.75
12EIG04	2.662	0.1971	4" IPS	4.5	4.8	0.41	3.43	6.3	8.7
12EIG06	6.978	0.5813	6" IPS	6.625	6.77	0.6	4.72	8.94	12.32
12EIG08	18.333	1.2147	8" IPS	8.625	9.17	0.79	5.51	11.02	15.61
12EIG10	30.102	2.1518	10" IPS	10.75	11.34	0.98	6.1	12.8	18.6
12EIG12	46.055	3.4985	12" IPS	12.75	13	1.16	7.6	15.28	21.77



EloFIT



ITEM: **EIG**

DESC: LONG SPIGOT 90° ELBOW
PE4710 SDR11



DRAWING No:
EL10060

SHEET OF
1 1 REV.
-6

www.nupiamericas.com - info@nupiamericas.com

All dimensions have to be considered in inches with 5% tolerance if not otherwise mentioned